

Figuring out Your Group Retreat Rate

There are three main components, plus any taxes and miscellaneous extra items. **The three main components are: Lodging; Meals; and the Conference/Facility use fee. (A+B+C.)** Please give us a call if you have any questions. For example, a one-night, three meal conference utilizing Rest-a-While Lodge and the Woolley meeting room would add up to: \$99.75, plus \$9.22 in taxes, which equals: \$108.97 per person.

A Lodging (per person)				
<i>A 5% Lake County Innkeeper's Tax & 7% IN Sales Tax will be applied to this portion of the bill.</i>				
	Rest-A-While Lodge <i>*2-night minimum Apr-Oct*</i>	Cedars Lodge	Hickory Lodge	Lakeview Lodge
Max. Capacity	164 Guests <i>S Wing: 54; W Wing: 56; N Wing: 54</i>	72 Guests	46 Guests	50 Guests
Min. Required	90 Guests or 30 per wing	30 Guests	30 Guests	30 Guests
<i>Lodging (per person)</i>	<i>(See below for "upper bunk" pricing)</i>			
1 Night	\$44.75	\$40.75	\$25.25	\$25.25
2 Nights	\$73.00	\$65.50	\$41.25	\$41.25
<i>Upper Bunk Pricing</i>	<i>(Once all lower beds are filled. Discount applies only to Lodging component.)</i>			
1 Night	22.50	20.50	13.50	13.50
2 Nights	36.50	33.00	21.50	21.50

B Meals (per person)			
<i>A 7% Indiana Sales Tax will be applied to this portion of the bill.</i>			
	Breakfast	Lunch	Dinner
Adults (age 12+)	\$8.00	\$10.00	\$12.00
Children (age 4-11)	\$5.35	\$6.70	\$8.00

C Conference/Facility Usage Fee (per person)				
<i>This fee covers one included meeting room, with set-up, use of recreational areas, on-call host services, parking and more... (For not-for-profit groups, this fee is tax-exempt.)</i>				
	Torrey Auditorium <i>(min. of #80 guests)</i>	Oaks (Moody/Woolley/ Rader Rooms)	Cedars Meeting Room	Hickory/Lakeview Meeting Rooms
1 Day	\$25.00	\$25.00	\$20.00	\$14.00
2-3 Days	\$40.00	\$40.00	\$32.50	\$22.00



Cedar Lake Ministries

13701 Lauerman Street, P.O.Box 665, Cedar Lake IN 46303

ph: 219-374-5941
fax: 219-374-7830

e-mail: info@cedarlakeministries.org
website: www.cedarlakeministries.org



Group Retreat Options and Rates

Effective January 1, 2011. Prices subject to change without notice.

These prices are for information & comparison.

Actual group rate will be determined in the contract process.

Rest-a-While Lodge

Maximum Capacity **164** guests

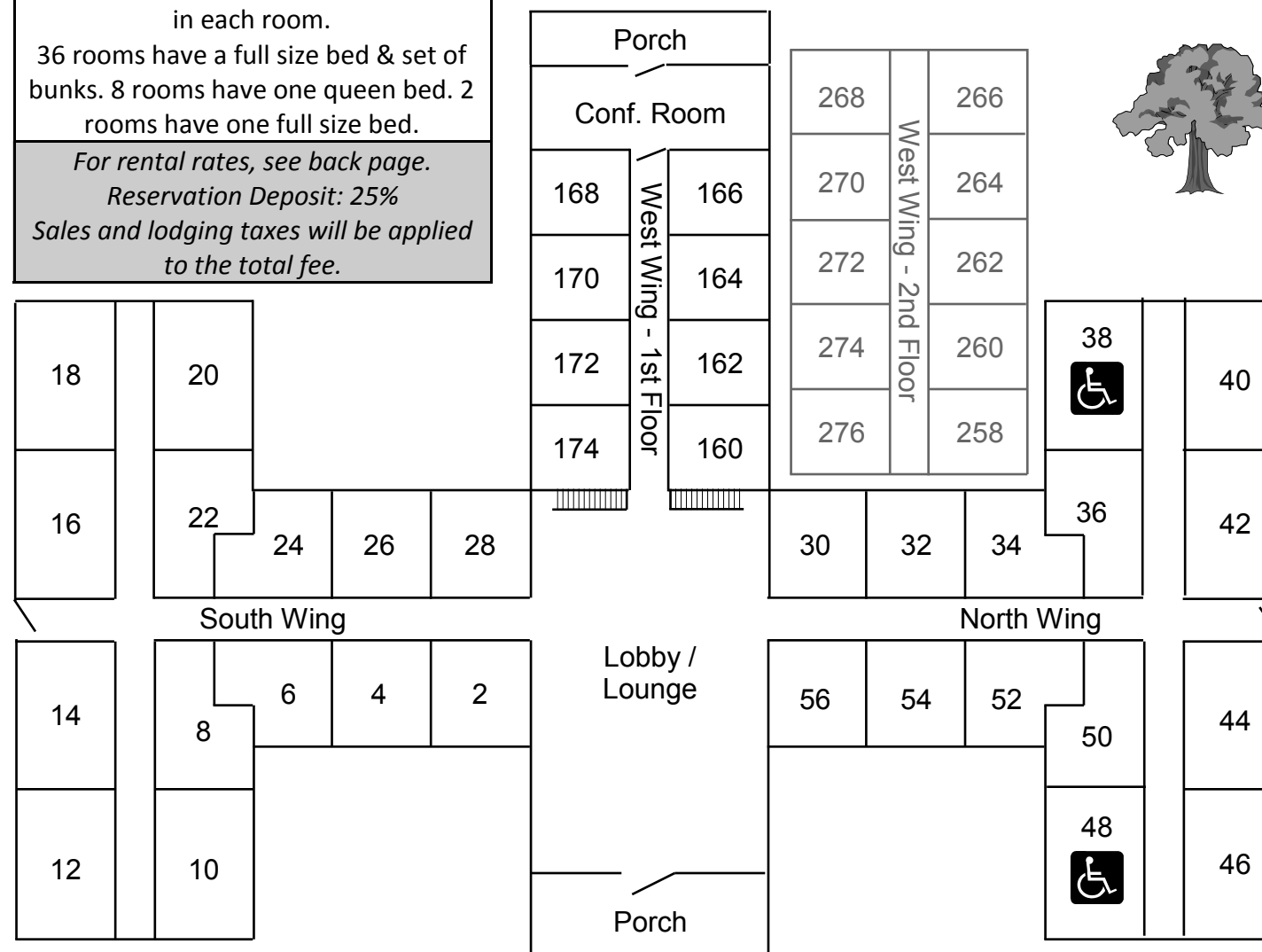
Minimum of **90** guests required to reserve the entire building.
Or a minimum of **30** guests to reserve one wing.

*** 2-night minimum Apr-Oct ***

Hotel-style building with private bath in each room.

36 rooms have a full size bed & set of bunks. 8 rooms have one queen bed. 2 rooms have one full size bed.

*For rental rates, see back page.
Reservation Deposit: 25%
Sales and lodging taxes will be applied to the total fee.*



Cedars Lodge

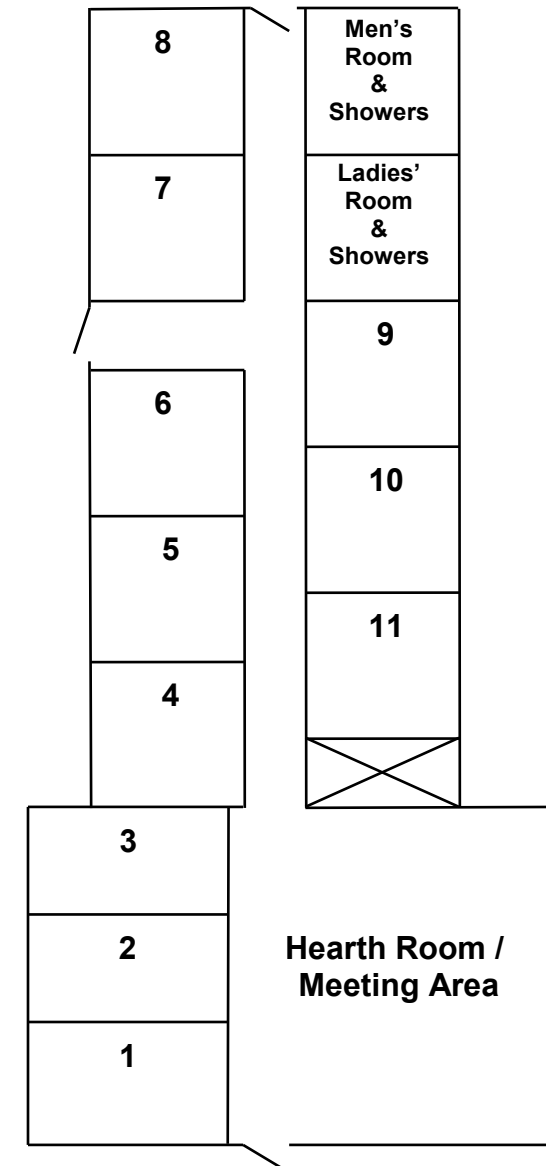
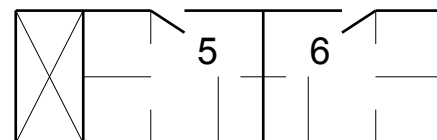
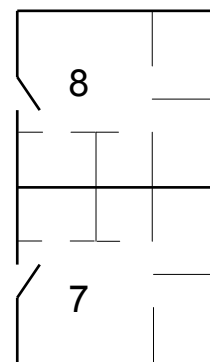
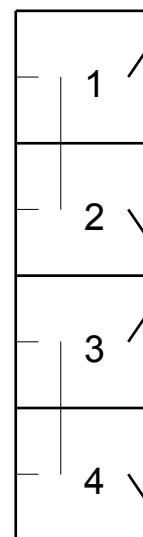
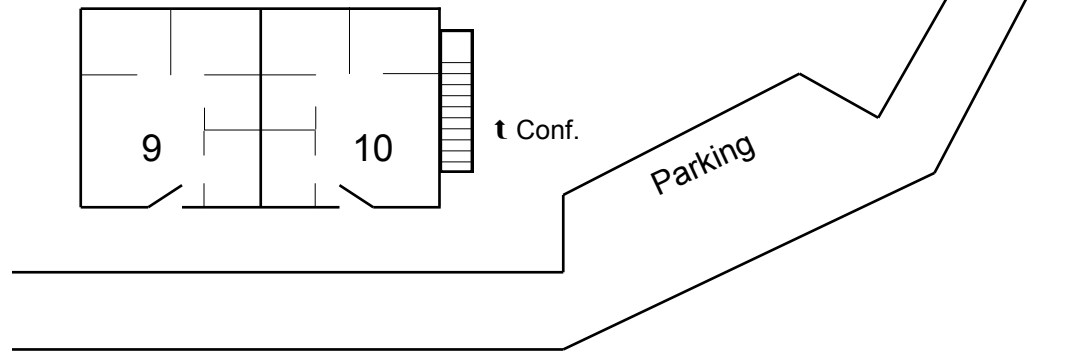
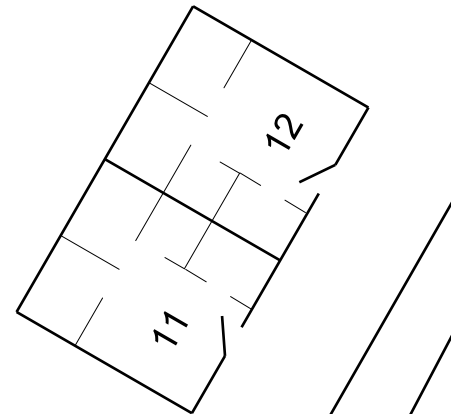
Maximum Capacity: **72** guests

Minimum of **30** guests required to reserve Units 7 - 12.
Additional units may be added if needed and if available.

Motel-style building with kitchenette & private bath in each room.
Units 1-4 each have 2 queen beds in one room.
Units 5-6 each have 2 bedrooms, each with a full size bed.
Units 7-12 each have 3 bedrooms, 1 with full size bed, 1 with full size bed & bunks and 1 with 2 twin beds.

Conference Room: Located in the finished basement under units #9 & 10; the room can accomodate 50-75 people (1000 sq ft.).

*For rental rates, see back page.
 Reservation Deposit: 25%
 Sales and lodging taxes will be applied to the total fee.*



Hickory Lodge



Lakeview Lodge



Maximum Capacity	46 guests	50 guests
Minimum Required	30 guests	30 guests
Dorm-style lodging with all bunk-beds.	Room #1 sleeps 6 Rooms #2-11 sleep 4 each	Rooms #1,2,6,7 & 10 sleep 6 each Rooms 3,4,5,8 & 9 sleep 4 each
Meeting Rooms:	600 sq ft.	500 sq ft.

*For rental rates, see back page.
 Reservation Deposit: 25%
 Sales and lodging taxes will be applied to the total fee.*

